



Frosty Friend

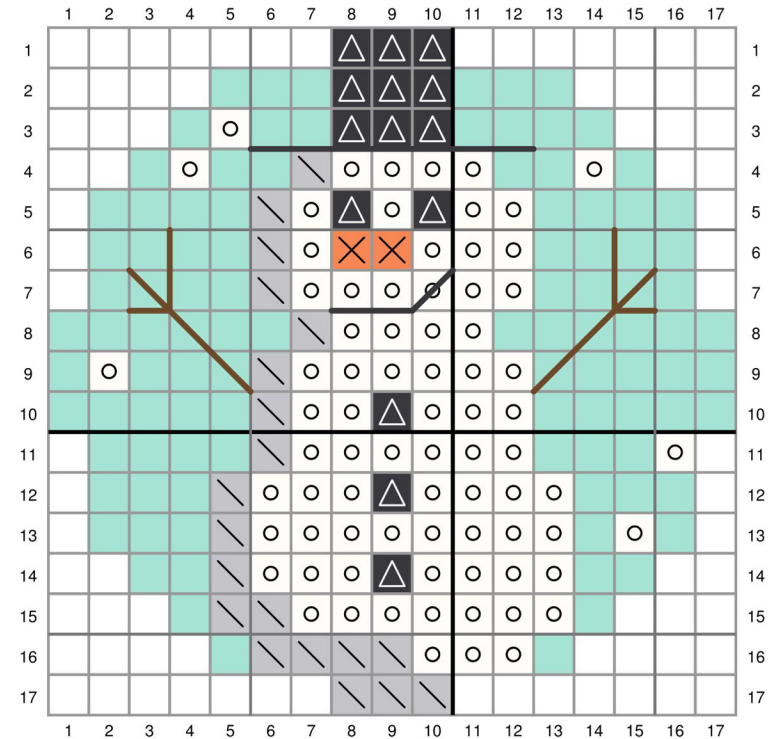
Pattern for Embroidery Hoop Lawn Cuts
by Chari Moss



created for lawn fawn by chari moss

Card Supplies Used:

- Embroidery Hoop LF3093
- Scribbled Sentiments: Winter LF3279
- Build-A-Snow Globe LF3254
- Merry Mistletoe LF3256
- Hearts and Stars Skinny Tag LF2572
- Outside In Stitched Rectangle Stackables LF1442
- Knit Picky Winter Petite Paper Pack LF2990
- Mermaid Cardstock LF1121
- Peacock Cardstock LF1122
- Narwhal Cardstock LF1272
- Kraft Cardstock LF1747
- Guava Cardstock LF1117
- Sparkle Cardstock - Pixie Dust LF1750
- Black Licorice Ink LF868



- No stitch
- DMC 3865 - Winter White
- DMC 3799 - Very Dark Pewter Gray - Backstitch with 4 strands
- DMC 02 - Tin
- DMC 722 - Light Orange Spice
- DMC 3862 - Dark Mocha Beige - Backstitch with 4 strands
- DMC 964 - Light Seagreen or Mermaid Cardstock